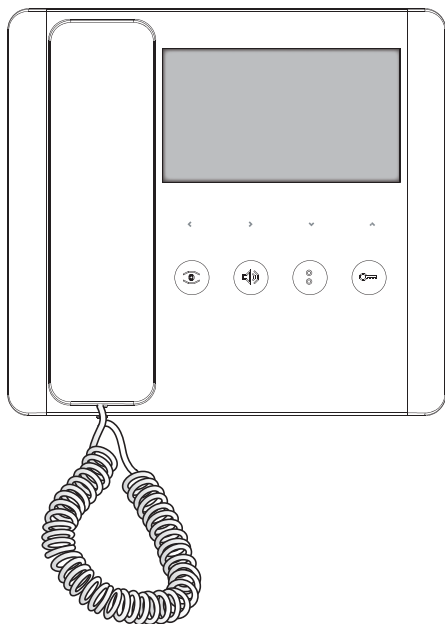




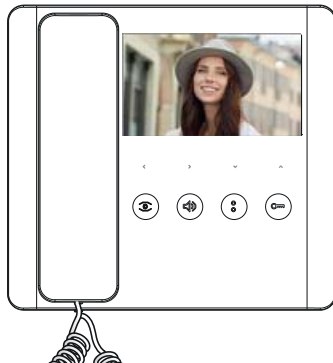
FA01377-EN



AGT V - AGT V BF

USER MANUAL

Functions of the keys



Activation and selection of entry panel.

The function is available only when the line is free.

Enable/Disable the automatic door opener function if pressed for more than 3 seconds. The status of this function is indicated by the led near the key



Repeatedly pressing it adjusts the volume of the ringtone: low, medium, high, off (red LED on).

In conversation activating the key excludes the microphone until it is activated again or the communication ends.



Auxiliary 2 / Porter call

AUX2 LED: signals a request to be called back by the porter

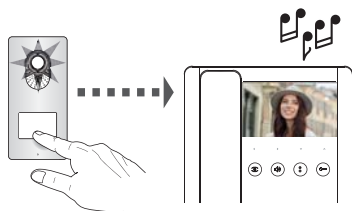


Door release/open-gate command if pressed for > 3 seconds (if the function is enabled).

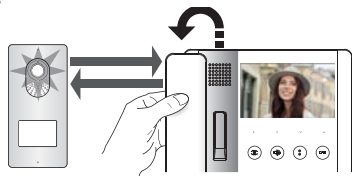
Door release LED: flashes when calling/ fixed when the open-gate function is active.

Use soft, dry or slightly damp cloths to clean the terminal; do not use any chemical products.

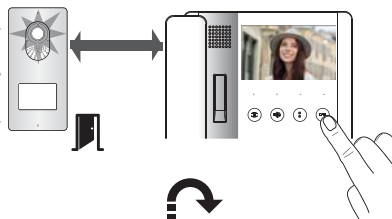
Basic functions



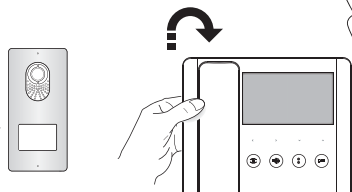
Call in progress.



Answering a call.

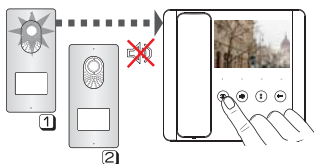


Active communication.
Open the door for the calling entry panel.

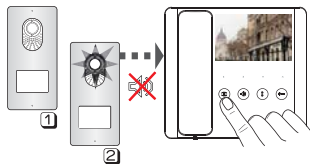


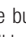
End the call.

Self-connection

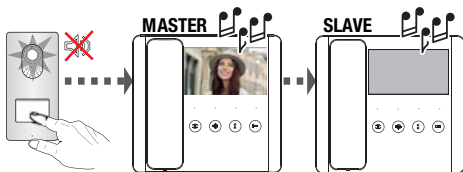


Press the key  to activate video communication with the entry panel.

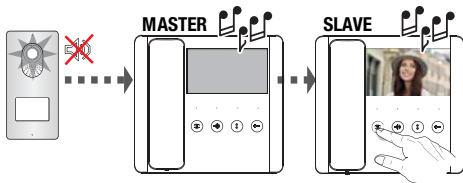



With multiple video entry panels, pressing the button  all the video entry panels will be displayed in succession.

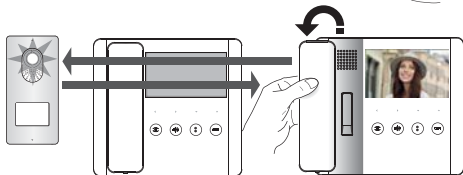
Video bouncing



In the event of a simultaneous call on several extensions all will ring, but the video will be activated only in the receivers configured as "MASTER".



It is however possible to transfer the display to a "SLAVE" receiver by pressing the key .



Lift the handset to start audio communication with the entry panel.

Porter functions

The functions described in this chapter are only available in systems with a porter switchboard/porter desk.

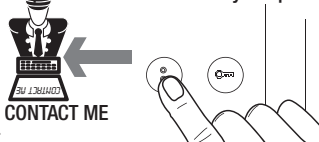
Notification of call by the porter




When the LED  turns on, it indicates that the porter wishes to be called back.

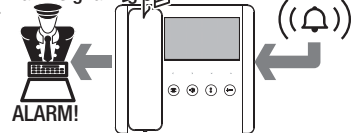
The LED turns off when communicating with the porter.

Request to be called back by the porter



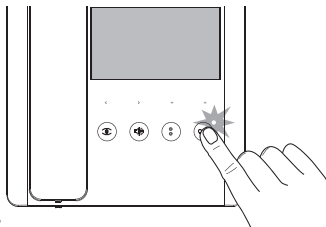
If properly configured, press the button  to send a message to the porter that you wish to be called back.


Alarm signalling




The activation of an alarm contact connected to the dedicated input of the receiver, activates the sending of a signal to the porter and this is notified on the receiver through an intermittent acoustic signal for about 10 seconds.

Open-gate function/status



Where allowed by the system and correctly configured, you can send an operator opening/closing command by pressing and holding the  key. The LED next to it indicates the operator status.

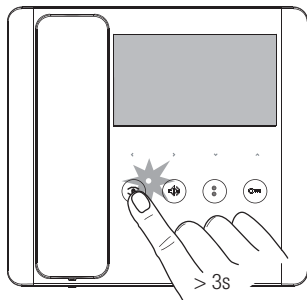
 The function must be activated on the receiver when the call is being associated during system programming

Door status function

Where the system is enabled accordingly, the LED next to the button indicates the current status of the door.

The function is active during the steps that involve communicating with the entry panel and the signal refers to the entrance associated with the entry panel.


Automatic door-release function



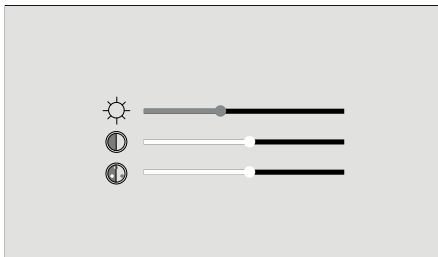
This function is especially useful for businesses as it allows you to open the entrance automatically once the call button has been pressed on the entry panel.

Press and hold the  button for more than 3 seconds to enable/disable the function.

The LED next to the button switches on to indicate that the function has been enabled.

 *No communication is activated and the call ends automatically.*

Adjustment of brightness, contrast and colour



These keys are used to adjust the brightness, contrast and colour of the display when the video is active.

Touch any key to access the menu.

Press briefly ◀ ▶ to adjust the parameter, pressing continuously allows a quick adjustment.

Press ▼ ▲ to scroll through the parameters.

Wait for a few seconds to exit the menu.

Decommissioning and disposal. Dispose of the packaging and the device at the end of its life cycle responsibly, in compliance with the laws in force in the country where the product is used. The recyclable components are marked with a symbol and the material's ID marker.

THESE INSTRUCTIONS MUST BE ATTACHED TO THE APPLIANCE, THE DATA AND INFORMATION SHOWN HEREIN ARE TO BE CONSIDERED AS SUBJECT TO CHANGE AT ANY TIME AND WITHOUT THE NEED FOR ANY ADVANCE WARNING.

