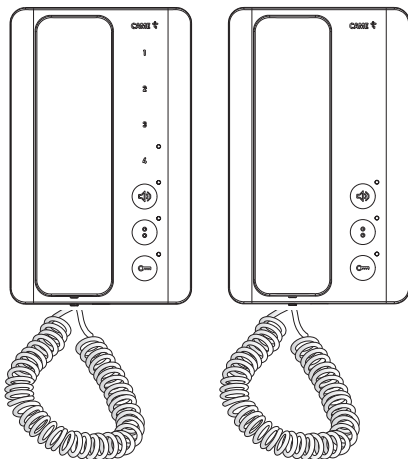




Internal Audio Receiver

FA01573-EN



AGT A - AGT A EVO

USER MANUAL

Function of buttons



- **Door release** button / Open-gate command if pressed for > 3 seconds.
Door release LED: flashing when calling/ fixed when the open-gate function is active.
-



- **Auxiliary 2 / Porter call**
AUX2 LED: Porter missed call alert.
-

1

Intercom 1: if the second function is activated, the key function becomes "Intercom 4". Prolonged operation enables/disables the "automatic door release" function.

2

Intercom 2: if the second function is activated, the key function becomes "Intercom 5".

3

Intercom 3: if the second function is activated, the key function becomes "Intercom 6".

Press and hold for < 2 seconds (the white LED flashes) to enable intercom calls from 4 to 6.

- Press and hold for > 2 seconds (the white LED flashes) to send a panic signal to the porter (where present).

4

LED functions:

Flashing light with second function and PANIC active. Fixed light with automatic door-release function active.




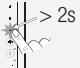

Setting the ringtone



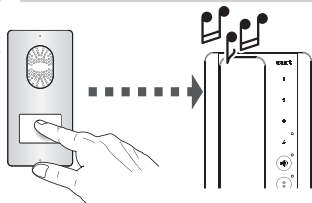
- Press repeatedly to adjust the ringtone volume: low, high, off (red LED on).
Activating this button during a conversation excludes the microphone until it is activated again or the communication ends.
-

☞ Only use soft, dry or slightly damp cloths for cleaning; do not use any chemical products.

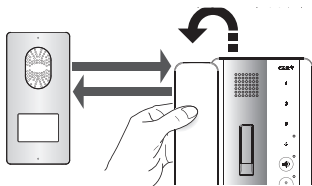
Functions of buttons 1-4 available for the EVO version

				
1	AUX1	INT.1	INT.4	 AUTO
2	AUX3	INT.2	INT.5	—
3	AUX4	INT.3	INT.6	—
4	AUX5	Second function (INT. 4-5-6)	Exclude second function	PANIC
LED 4	Turned off	Turned off	Flashing	On (1) Flashing (4)

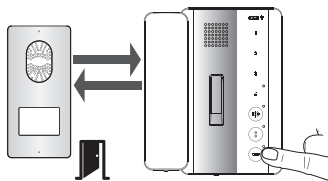
AGT A - AGT A EVO basic functions



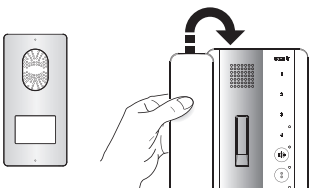
Calling.



Answering a call.




Opening the door for the calling entry panel.



Ending the call.

Open-gate function

Where allowed by the system and correctly configured, you can send an operator opening/closing command by pressing and holding the  key (> 3s). The door release LED indicates the status of the operator.

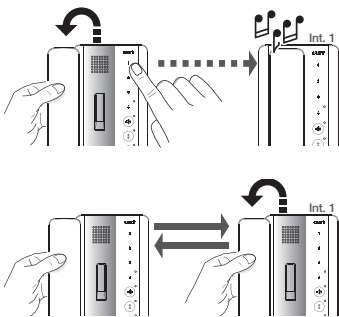
☞ The function must be activated on the receiver when the call is being associated during system programming.

Door status function

Where allowed by the system, the door release LED indicates the current status of the door.

The function is active during the steps that involve communicating with the entry panel and the signal refers to the entrance associated with the entry panel.

AGT A EVO intercommunication

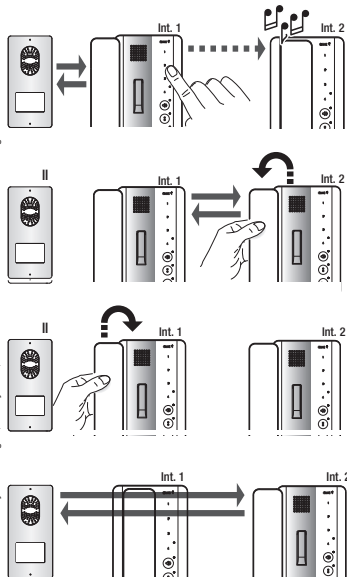


To call an internal receiver, pick up the handset and press the button for the receiver you want.

During a conversation between internal receivers, a call from an entry panel is signalled to the receivers by a beep that repeats every 5 seconds.

3 successive beeps indicate that the line is busy and a call cannot be made.

AGT A EVO transferring a call



With a call active, select the internal receiver to which the call is to be transferred.

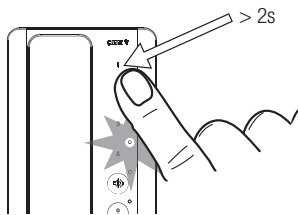
As soon as the handset at the internal receiver which has been called is picked up, the call is active between the two receivers; the entry panel remains on hold.

To connect internal receiver 2 with the entry panel, internal receiver 1 must put the handset down.

The receiver that receives the call can also transfer it.

The receiver that receives the call can also transfer it.

Automatic door-release function



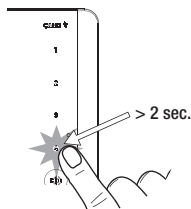
This function is especially useful for businesses as it allows you to open the entrance automatically once the call button has been pressed on the entry panel.

☞ No communication is activated and the call ends automatically.

AGT A EVO porter functions

The functions described in this chapter are only available for systems with a porter desk.

Function of the Panic button



Press and hold the (CALL) button for at least 2 seconds; the receiver beeps and the white LED turns on to confirm that the **Panic** signal has been sent to the porter, together with the caller's number. The receiver LED continues to flash until the porter calls the user back.

The Panic warning has priority over all calls.

Alarm signals

If an alarm device has been connected at the receiver entrance, a signal is sent to the porter when the alarm is activated and the receiver beeps intermittently for about 10 seconds.

Dismantling and disposal. Dispose of the packaging and the device responsibly at the end of its life cycle, in compliance with the laws in force in the country where the product is used. The recyclable components are marked with a symbol and the material ID marker.

THESE INSTRUCTIONS MUST BE SUPPLIED WITH THE DEVICE. THE DATA AND INFORMATION CONTAINED IN THEM ARE TO BE CONSIDERED AS SUBJECT TO CHANGE AT ANY TIME AND WITHOUT THE NEED FOR ANY ADVANCE WARNING.

CAME 

CAME.COM

CAME S.P.A.

Via Martiri Della Libertà, 15
31030 Dosson di Casier - Treviso - Italy
tel. (+39) 0422 4940 - fax. (+39) 0422 4941